

CRUISE

***intel*B**

trouble shooting

CRUISE49_(DC)_TS_11-12-2018

CRUISE

3 - 4	HOW TO DETECT THE TYPE OF FAULT
5	ERROR E1
6	ERROR E2
7	ERROR E3
8	ERROR E4
9	ERROR E5
10 - 11	HOW TO REPLACE THE THERMOSTAT
12	HOW TO REPLACE THE FAN
13	HOW TO REPLACE THE ECU
14	HOW TO REPLACE THE DOOR PANEL
15	HOW TO REPLACE THE DOOR
16	HOW TO REPLACE THE LIGHT BULB
17	HOW TO REPLACE THE FREEZER DOOR
18	HOW TO REVERSE THE OPENING DIRECTION

indelB

CRUISE49_(DC)_TS_11-12-2018

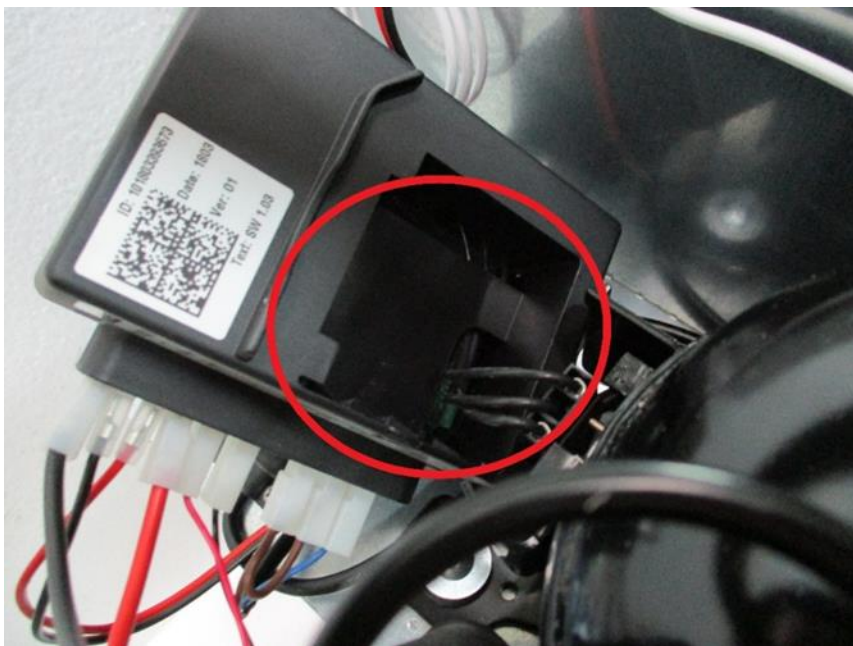
HOW TO DETECT THE TYPE OF FAULT

A. FLASHING ERRORS

This refrigerator is not equipped with display, so you need to unscrew the ECU and control the number of flashes. You may detect errors from the ECU. Each error corresponds to a number of flashes from a led inside the ECU:



Unscrew the bolt fixing the ECU, and move the ECU



Control in the highlighted area to see the number of flashes

Kind of faults:

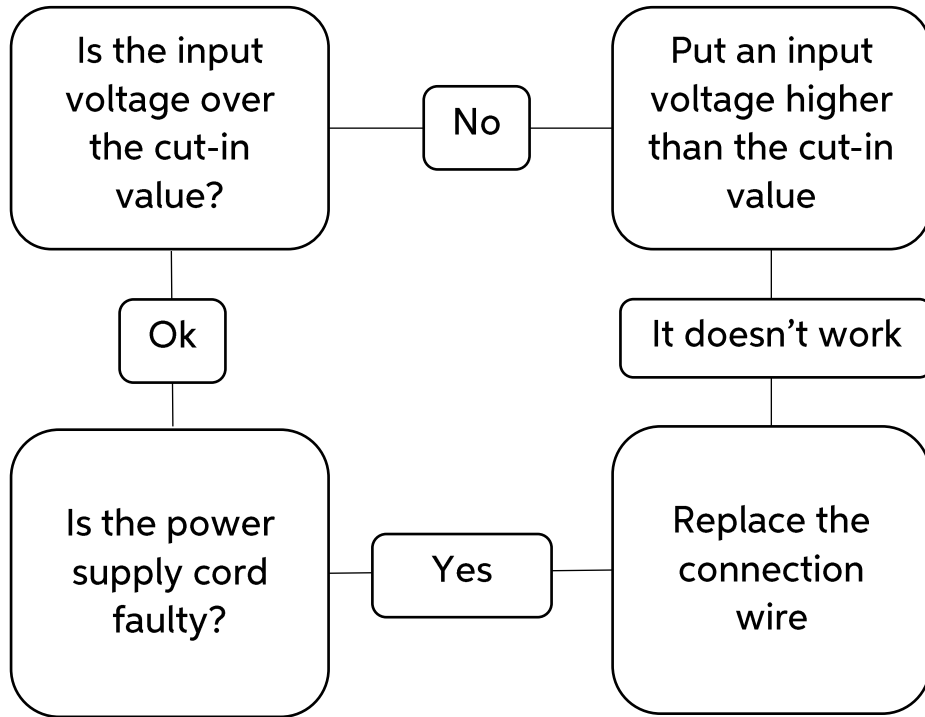
ERROR CODE	ERROR TYPE
E1	Battery protection cut-out (The voltage is outside the cut-out setting).
E2	Fan over-current cut-out (The fan loads the electronic unit with more than $1A_{peak}$).
E3	Motor start error (The rotor is blocked or the differential pressure in the refrigeration system is too high (>5 bar)).
E4	Minimum motor speed error (If the refrigeration system is too heavily loaded, the motor cannot maintain minimum speed 1,850 rpm).
E5	Thermal cut-out of electronic unit (If the refrigeration system has been too heavily loaded, or if the ambient temperature is high, the electronic unit will run too hot).

B. NON-FLASHING ERROR

There are also errors that aren't detected by the ECU:

- 1. NO POWER SUPPLY:** Check the connection between the power supply and the battery. Check if the cable's length is correct (see the instruction manual)
- 2. FAULTY THERMOSTAT:** You need to disconnect the wire from the C, P and T plug of the ECU, then make a bridge between C and T. If the refrigerator operates the thermostat is faulty and need to be replaced. Otherwise the ECU need to be replaced.
- 3. THE MOTOR OPERATES BUT THE REFRIGERATOR DOES NOT COOL:** Check if the evaporator/freezer has not been punctured or damaged by user. Otherwise let check the refrigerator from a service station.

- **ERROR E1: Battery protection cut-out**



- **ERROR E2: Fan over-current cut-out**

This error is caused by an over-current that arrived at the fan. In this case you must replace the fan (see “How to replace the fan”).

- ERROR 3: Motor start error

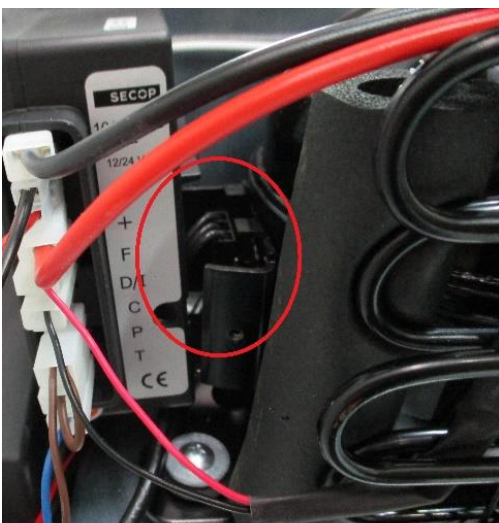
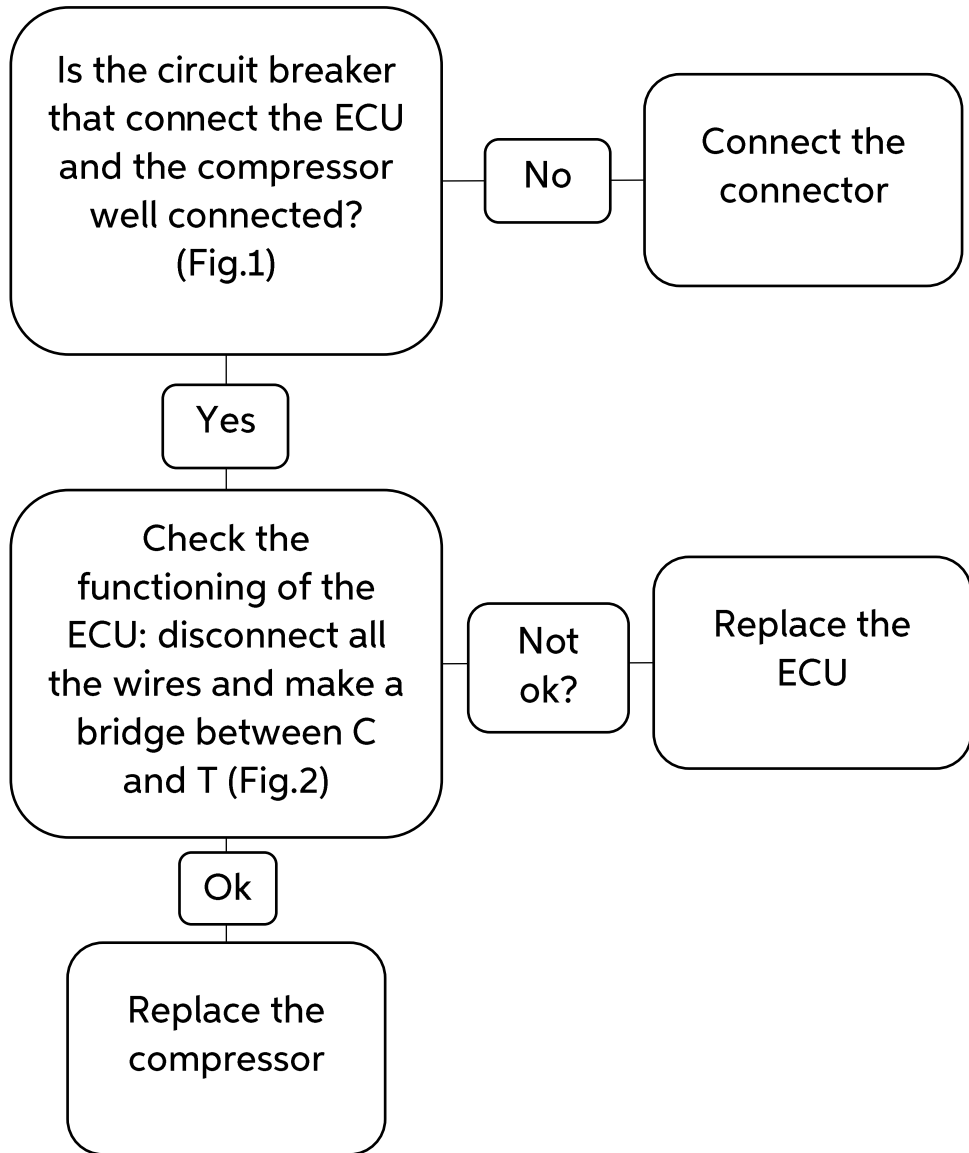
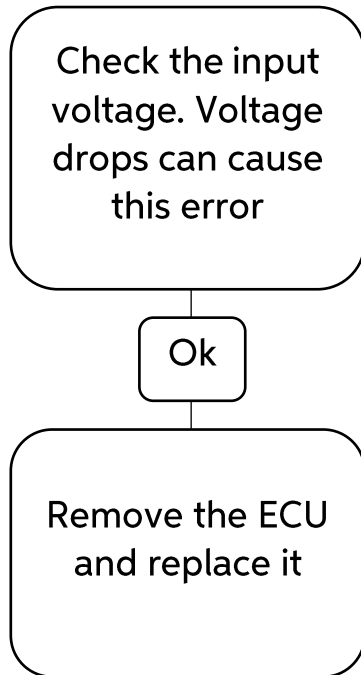


Fig. 1

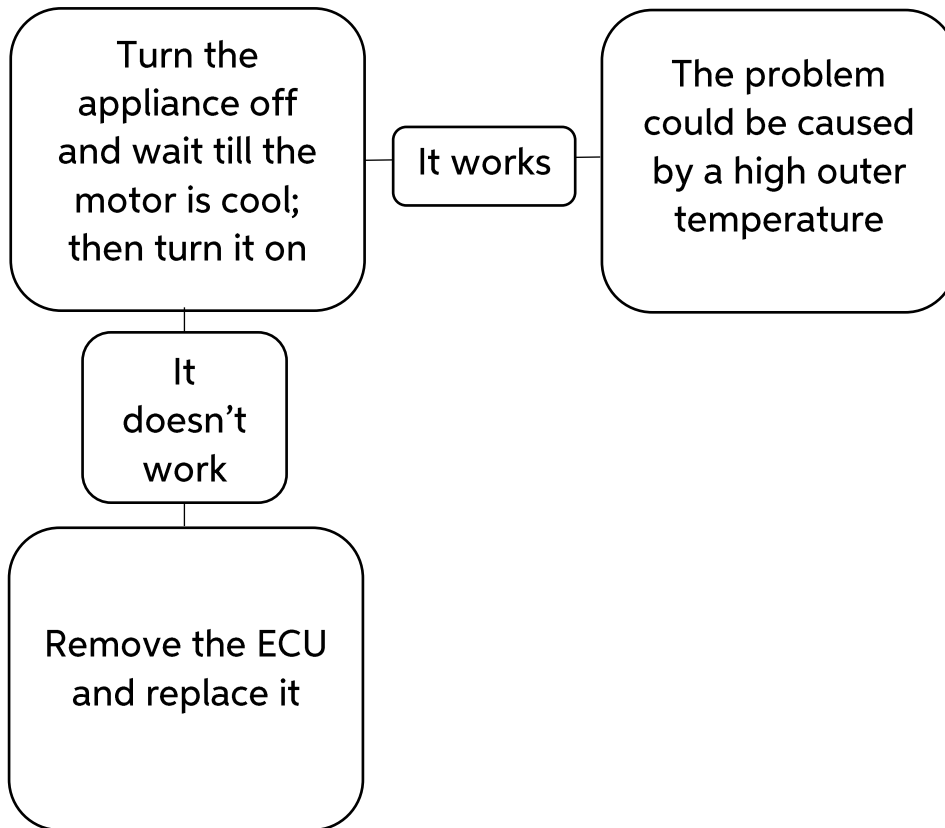


Fig. 2

- ERROR E4: Minimum motor speed error



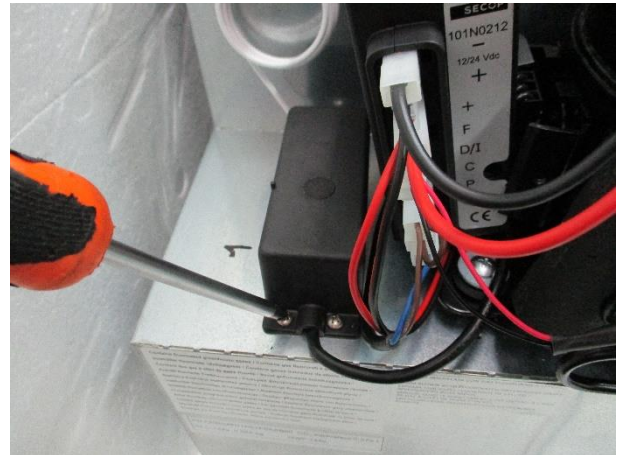
- ERROR E5: Thermal cut-out of electronic unit



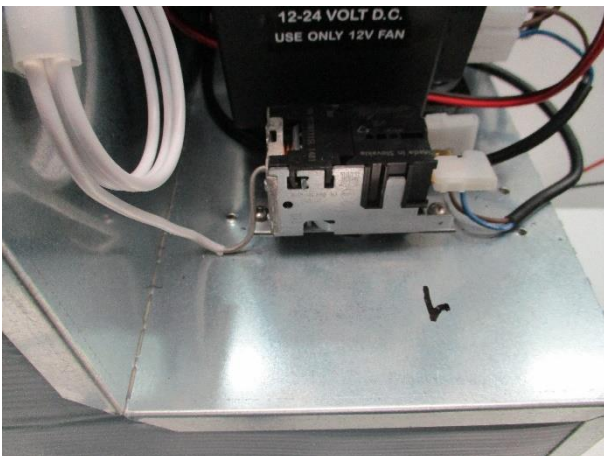
HOW TO REPLACE THE THERMOSTAT



1. Remove the knob of the thermostat (pull it down)



2. Unscrew the protection box of the thermostat (3 screws)



3. Unscrew the 2 bolts fixing the thermostat



4. Unscrew the plastic support



5. Remove the drip tray



6. Remove the plastic protection

CRUISE49

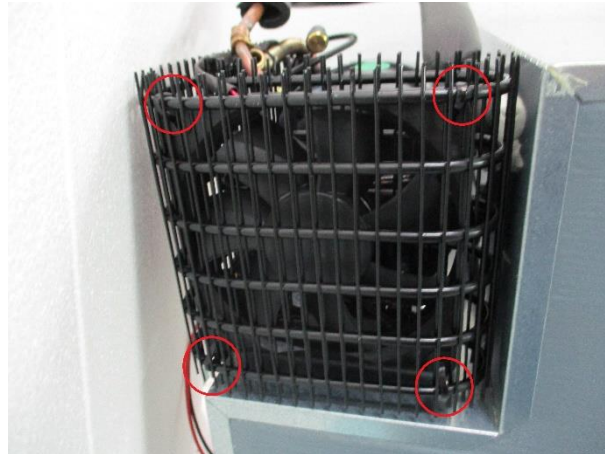


7. Unscrew the 2 bolts



8. Remove the thermostat bulb.
Reverse the procedure to replace it

HOW TO REPLACE THE FAN

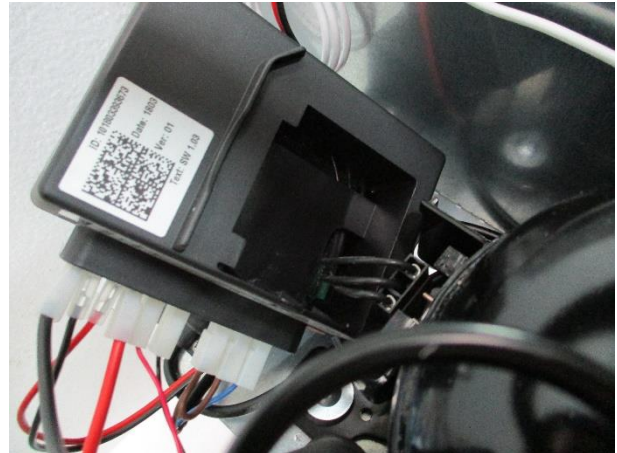


Cut the 4 clamps to remove the fan

HOW TO REPLACE THE ECU

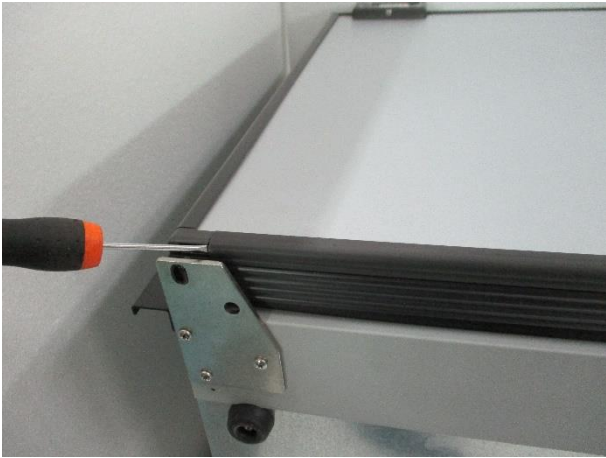


1. Unscrew the bolt fixing the ECU



2. Disconnect the wires and remove the ECU

HOW TO REPLACE THE DOOR PANEL



1. Use a thin object as a lever to remove the frame



2. Remove the handle (3 screws)



3. Remove the panel and reverse the procedure to replace it

HOW TO REPLACE THE DOOR



1. Unscrew the 2 hinges (6 screws)



2. Loose the screw nut



3. Lift the door from the opposite side of the screw nut to remove it. Reverse the procedure to replace it

HOW TO REPLACE THE LIGHT BULB



Press the button and pull down the light bulb to remove it

HOW TO REPLACE THE FREEZER DOOR



Pull out the freezer door from the corner to uninstall it

HOW TO REVERSE THE OPENING DIRECTION



1. Unscrew the 2 hinges (6 screws)



2. Loose the screw nut



3. Lift the door from the opposite side of the screw nut to remove it. Reverse the procedure to replace it



4. Remove the handle (3 screws)

5. Reverse the procedure.

6. Install the hinges in the opposite side as well as the nut and the handle.