

T B S E R I E S

indelB

trouble shooting

TB_STEEL_SD_(AC_DC)_TS_30-11-2018

T B S E R I E S

- 3 ERROR E1
- 4 ERROR E2
- 5 ERROR E3
- 6 ERROR E4
- 7 ERROR E5
- 8 ERROR LL/ HH
- 9 HOW TO REPLACE THE TEMPERATURE SENSOR
- 10 HOW TO REPLACE THE FAN
- 11 HOW TO REPLACE THE LIGHT BULB
- 12 HOW TO REPLACE THE ECU
- 13 HOW TO REPLACE THE DISPLAY
- 14 HOW TO REPLACE THE LID
- 15 HOW TO REPLACE THE PLUG'S LABEL

indelB

TB_ STEEL_SD_(AC_DC)_TS_30-11-2018

- ERROR E1: Battery protection cut-out

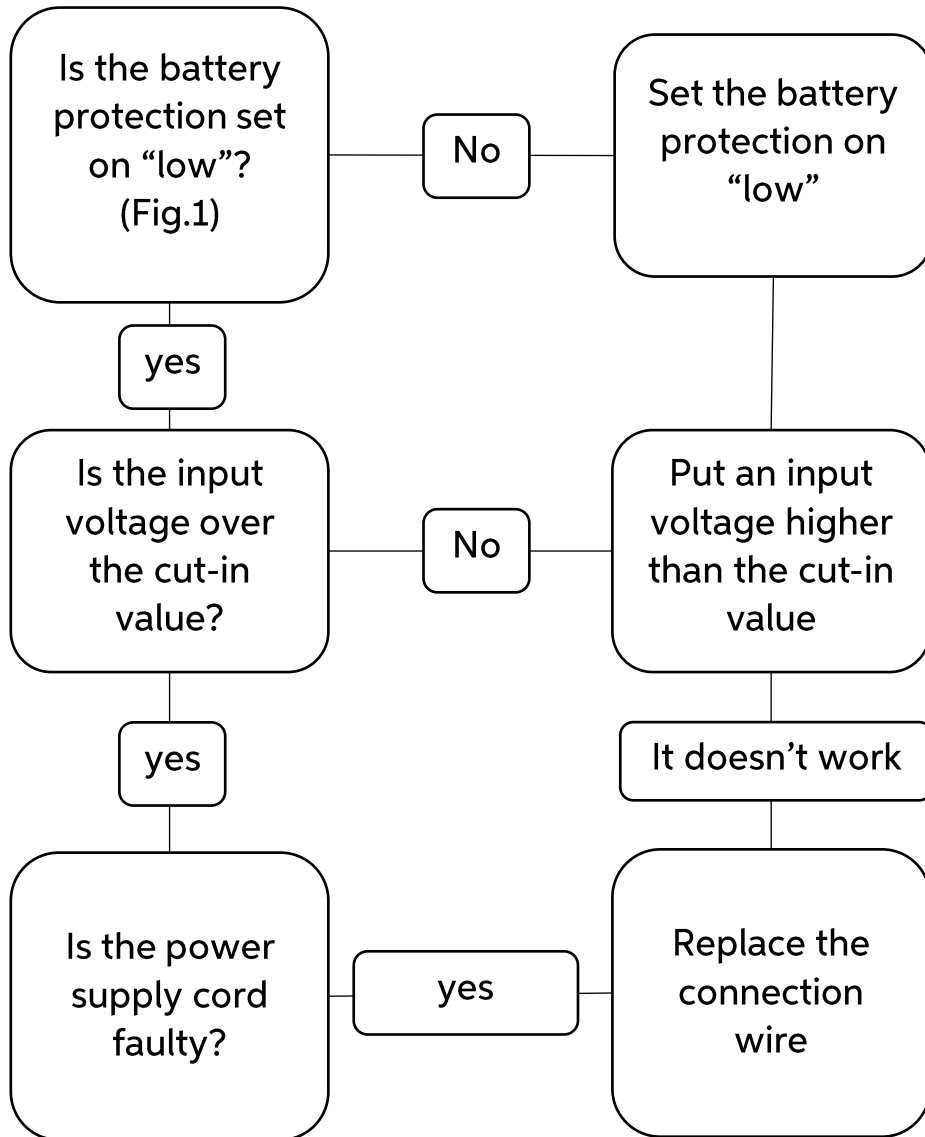


Fig. 1

- **ERROR E2: Fan over-current cut-out**

This error is caused by an over-current that arrived at the fan. In this case you must replace the fan (see “How to replace the fan”).

- ERROR E3: Motor start error

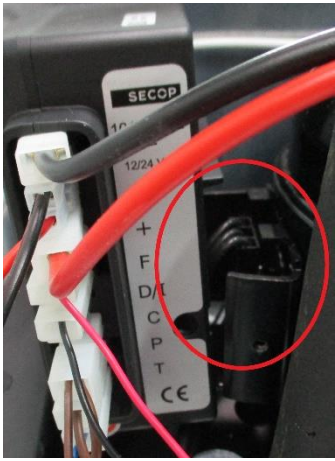
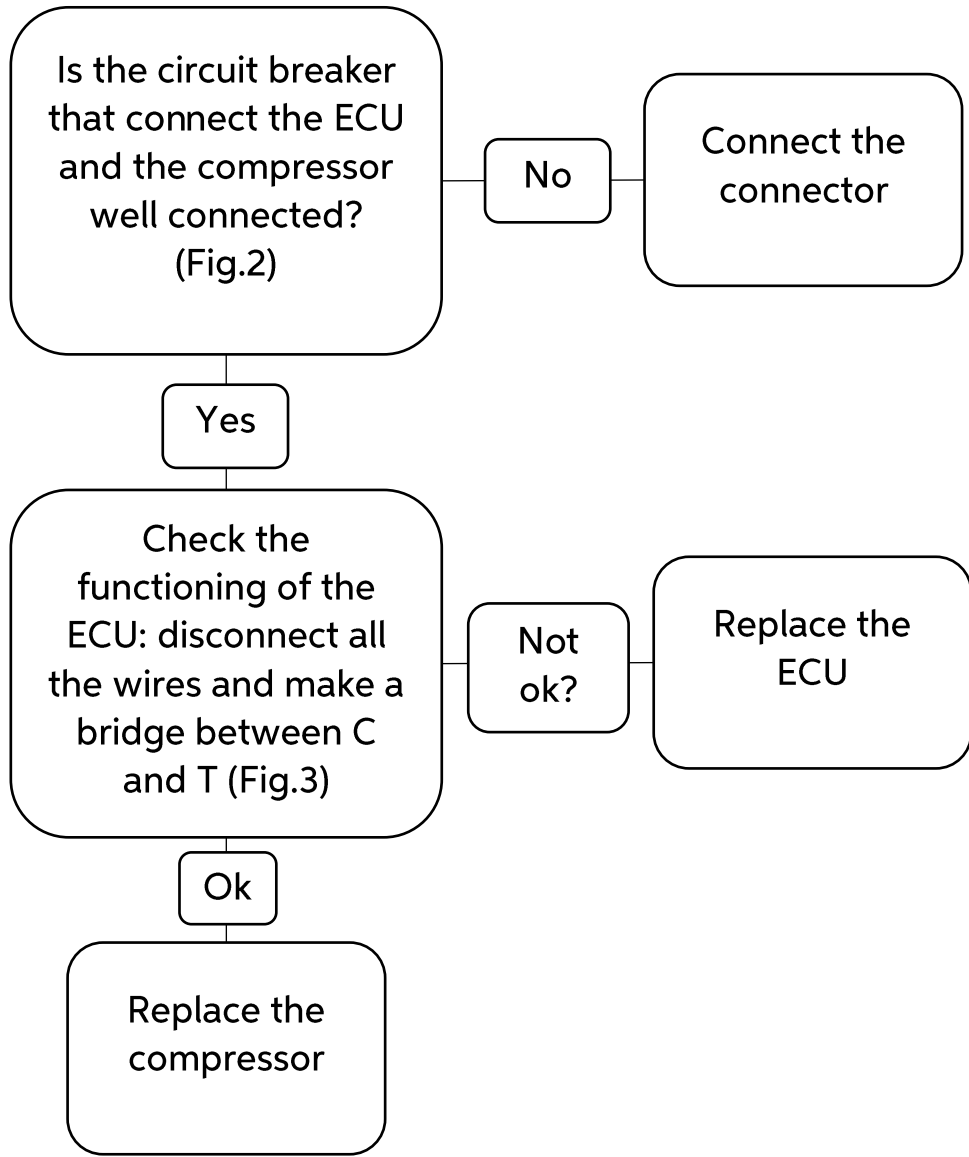


Fig. 2

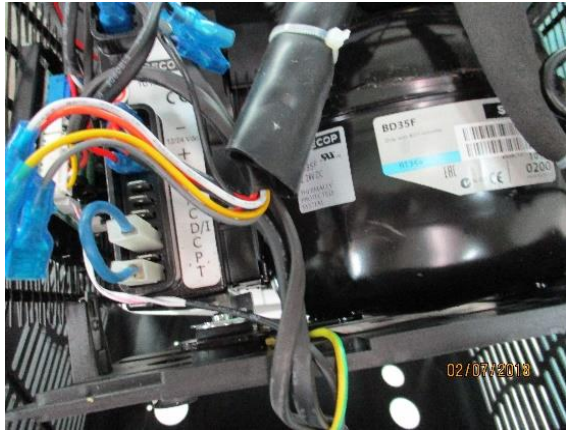
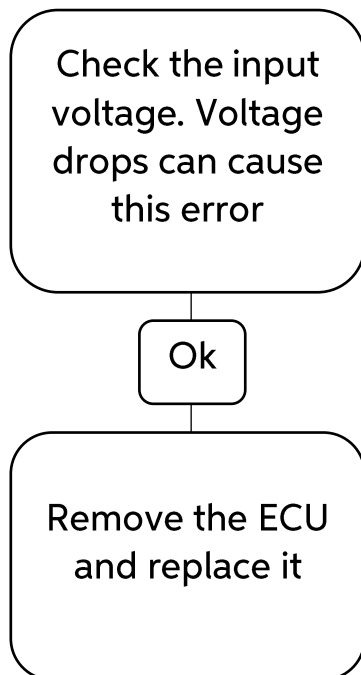
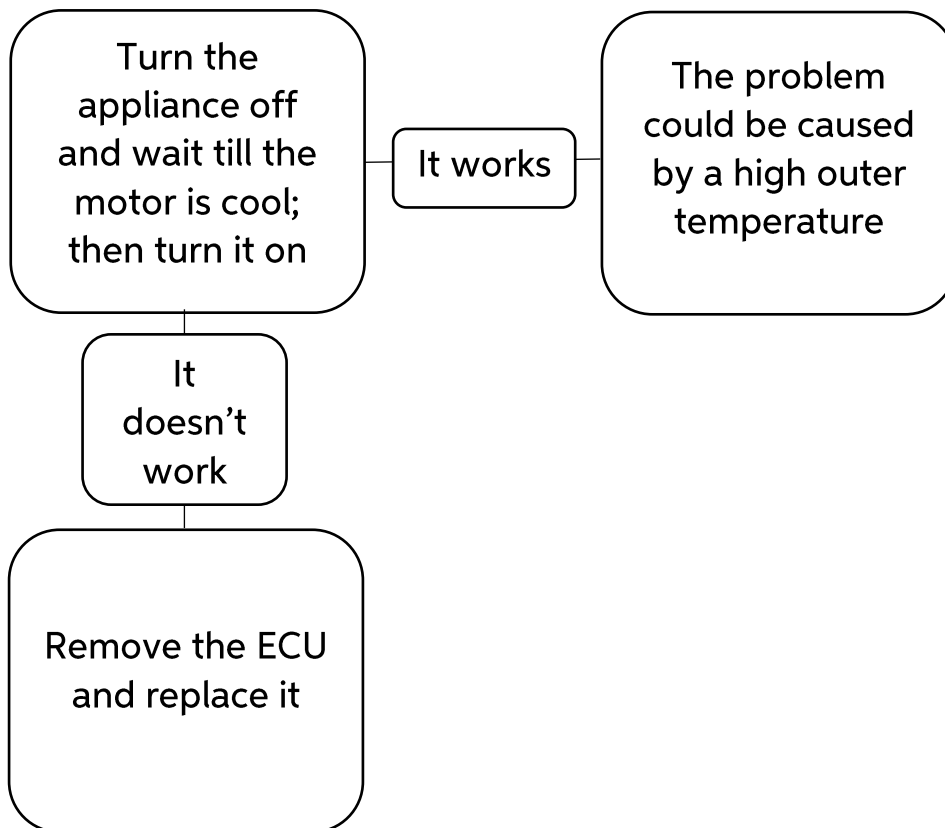


Fig. 3

- ERROR E4: Minimum motor speed error



- ERROR E5: Thermal cut-out of electronic unit



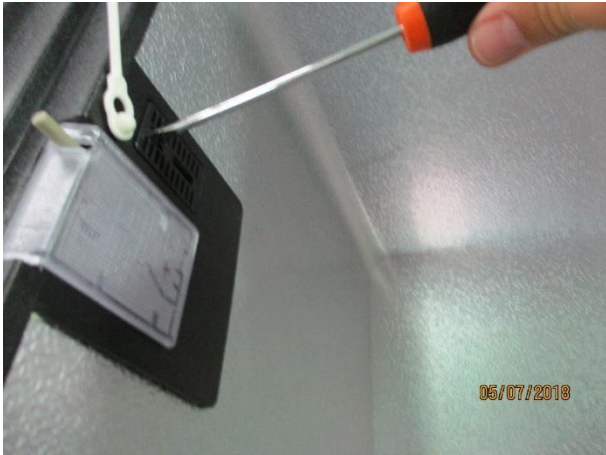
- **ERROR LL: Faulty temperature sensor**

This error is caused by a problem of the connection wires. The connection wires could be faulty or disconnected. In this case you need to connect or replace the wires.

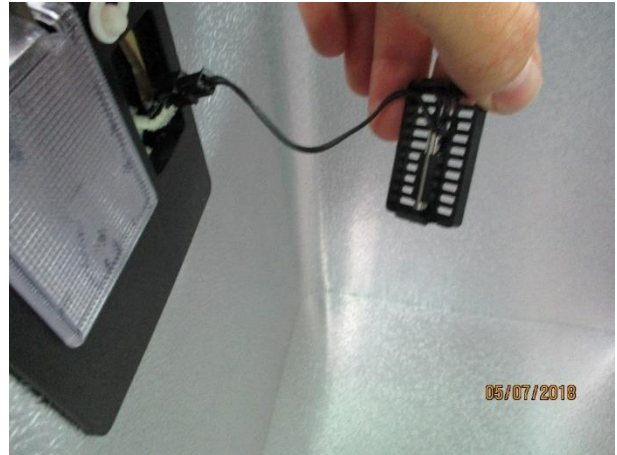
- **ERROR HH: Faulty temperature sensor**

This error is caused by a problem of the temperature sensor. In this case you need to replace the temperature sensor.

HOW TO REPLACE THE TEMPERATURE SENSOR



1. Open the lid and remove the label using a thin object



2. Remove the temperature sensor and replace it

HOW TO REPLACE THE FAN



1. Unscrew the 2 corners (2 bolts)



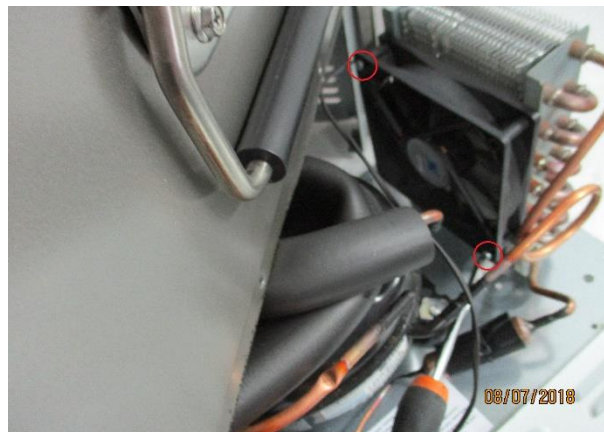
2. Unscrew the bolts fixing the bottom of the carter (12 bolts)



3. Unscrew the lateral bolts of the carter (4 bolts)



4. Lift the refrigerator and move forward the plate fixing the fan



5. Unscrew the fan (2 bolts) and reverse the procedure to replace it

HOW TO REPLACE THE LIGHT BULB



1. Press the button and remove the light bulb



2. Remove the light bulb and replace it

HOW TO REPLACE THE ECU



1. Unscrew the 2 corners (2 bolts)



2. Unscrew the bolts fixing the bottom of the carter (12 bolts)



3. Unscrew the lateral bolts of the carter (4 bolts)

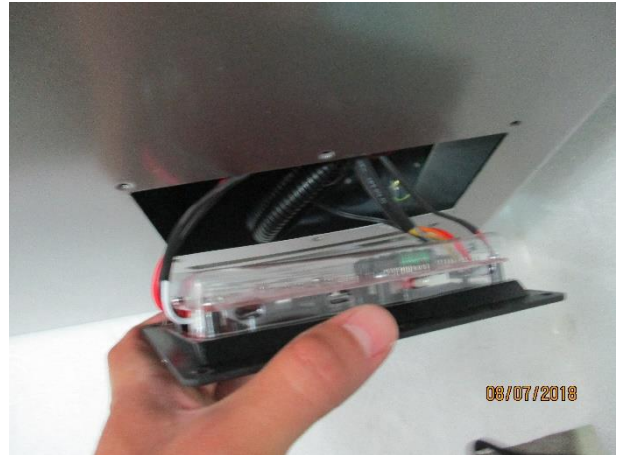


4. Unscrew the bolt that fix the ECU, disconnect all the wires and reverse the procedure to replace it

HOW TO REPLACE THE DISPLAY



1. Unscrew the display (6 bolts)



2. Disconnect all the wires and reverse the procedure to replace the display

HOW TO REPLACE THE LID



1. Detach the connection element



2. Flip the lid until it is detached

Attention: hold firmly the lid because it could fall and damage

HOW TO REPLACE THE PLUG'S LABEL



1. Unscrew the 2 corners (2 bolts)



2. Unscrew the bolts fixing the bottom of the carter (12 bolts)